

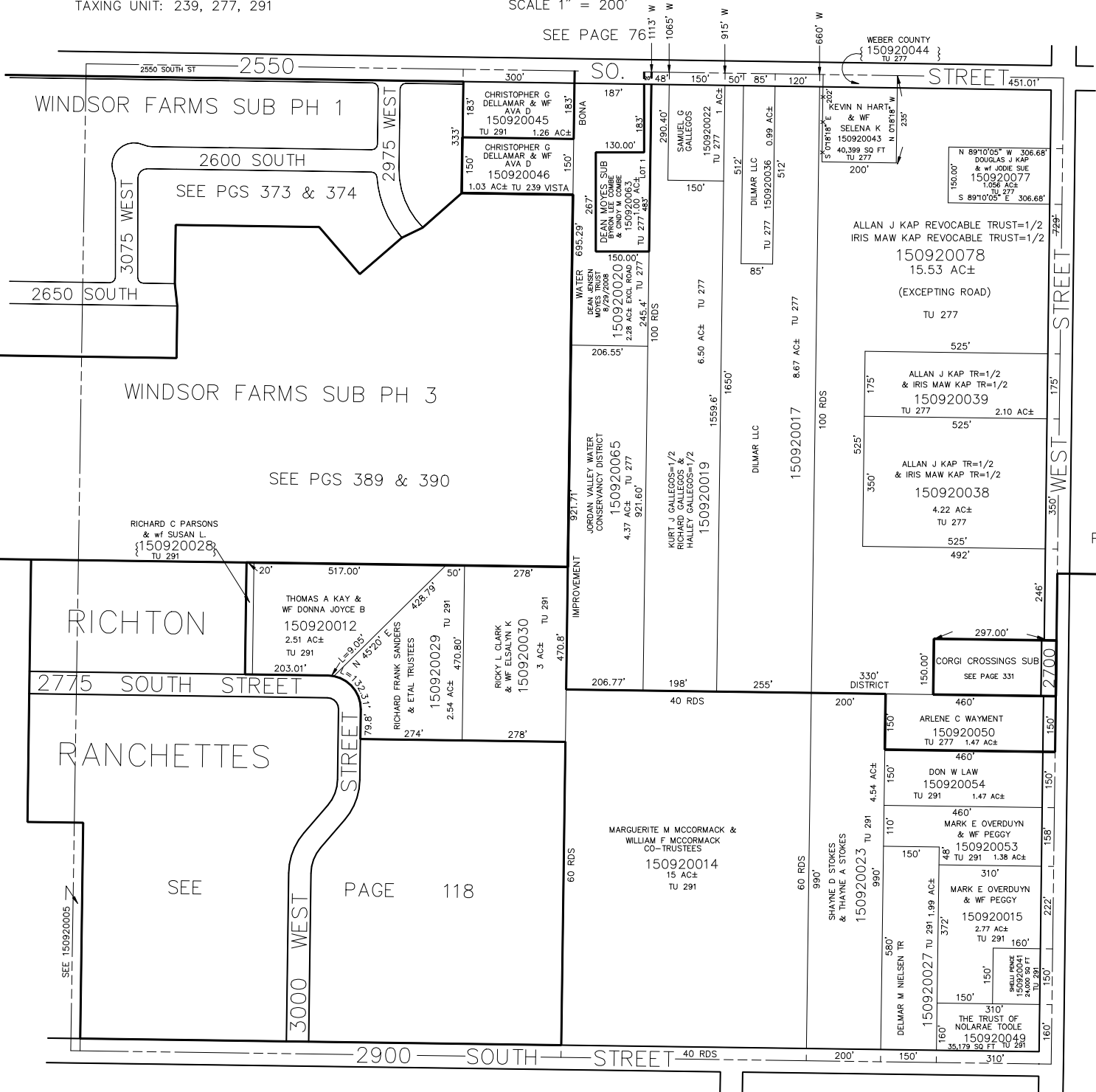
N.E. 1/4
SECTION 34, T.6N., R.2W., S.L.B. & M.

IN WEST HAVEN CITY

TAXING UNIT: 239, 277, 291

SCALE 1" = 200'

SEE PAGE 76



WEBER COUNTY
150920044
TU 277

N 89°10'05" W 306.68'
DOUGLAS J KAP
& Wf ROBE SUE
150920077
1.056 AC±
TU 277
S 89°10'05" E 306.68'

ALLAN J KAP REVOCABLE TRUST=1/2
& IRIS MAW KAP REVOCABLE TRUST=1/2
150920078
15.53 AC±
(EXCEPTING ROAD)
TU 277

525'
175'
ALLAN J KAP TR=1/2
& IRIS MAW KAP TR=1/2
150920039
TU 277
2.10 AC±

525'
350'
ALLAN J KAP TR=1/2
& IRIS MAW KAP TR=1/2
150920038
4.22 AC±
TU 277
525'
492'

297.00'
150.00'
CORGI CROSSINGS SUB
SEE PAGE 331

460'
ARLENE C WAYMENT
150920050
TU 277 1.47 AC±

460'
DON W LAW
150920054
TU 291 1.47 AC±

460'
MARK E OVERDUYN
& Wf PEGGY
150920053
TU 291 1.38 AC±

310'
MARK E OVERDUYN
& Wf PEGGY
150920015
2.77 AC±
TU 291 160'

150'
DELMAR W NIELSEN TR
150920027 TU 291 1.09 AC±

150'
310'
THE TRUST OF
NOLARAE TOOLE
150920044
35,179 SQ FT TU 291

SEE PAGE 96